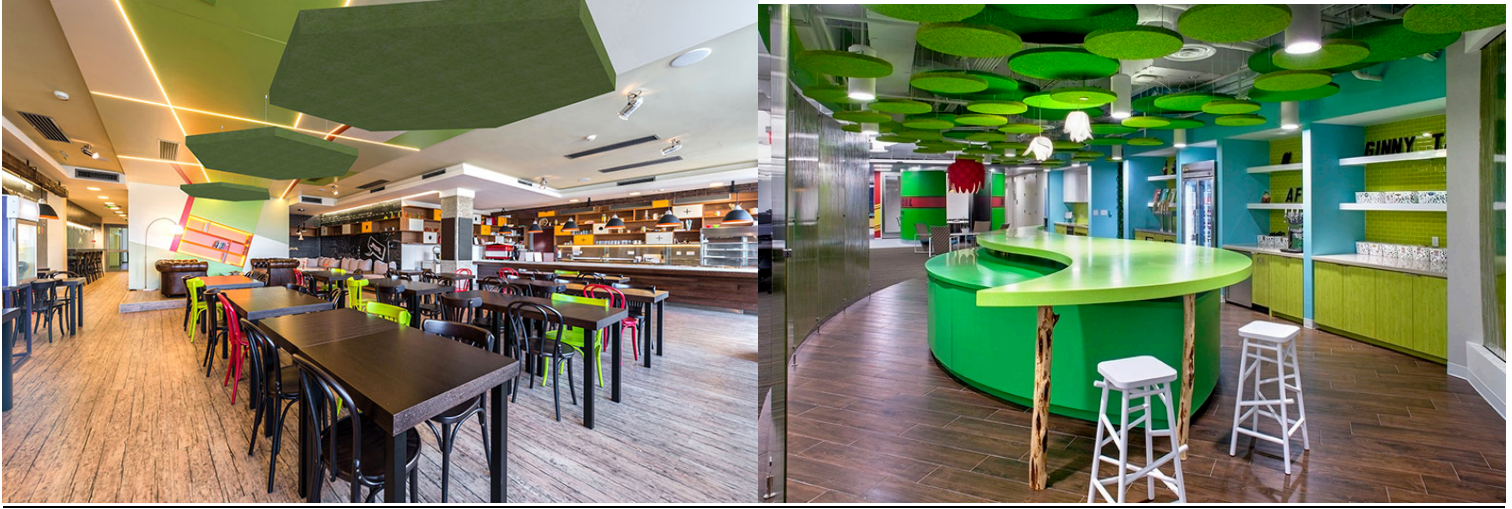


Acoustic Ceiling Rafts – Install Instructions

PRODUCT: Hush Acoustic Ceiling Rafts



Blupuffin Designs
Suite 105, 11500-29 Street SE, Calgary, Alberta, T2Z 3W9,
Canada
www.blupuffin.com | sales@blupuffin.com

Installation

The installation time for our Shush Raft™ panels is easy and quick. In fact, it does not require a specialist fitter to carry out the installation. The acoustic rafts are simply suspended by steel cables from the soffit by means of special spiral hooks which are fitted into the reverse of the raft by means of clockwise rotation.

Height level adjustment can be carried out by manipulating the length of each cable to suit when it is inserted into the eyelet hook. Shush Raft™ can be set at an angle if required to increase design and aesthetic properties.

The spiral hooks should be placed approx. 200mm in from the edge of the Shush Raft™ panel. For angled installations, we recommend the largest panels to be no more than 600mm x 600mm.

Our hanging kit includes spiral hook, 2m cable and eyelet hook.



Shush Raft™ hanging kit

