

Acoustic Sound Panels – Install Instructions

PRODUCT: Hush Sound Liners



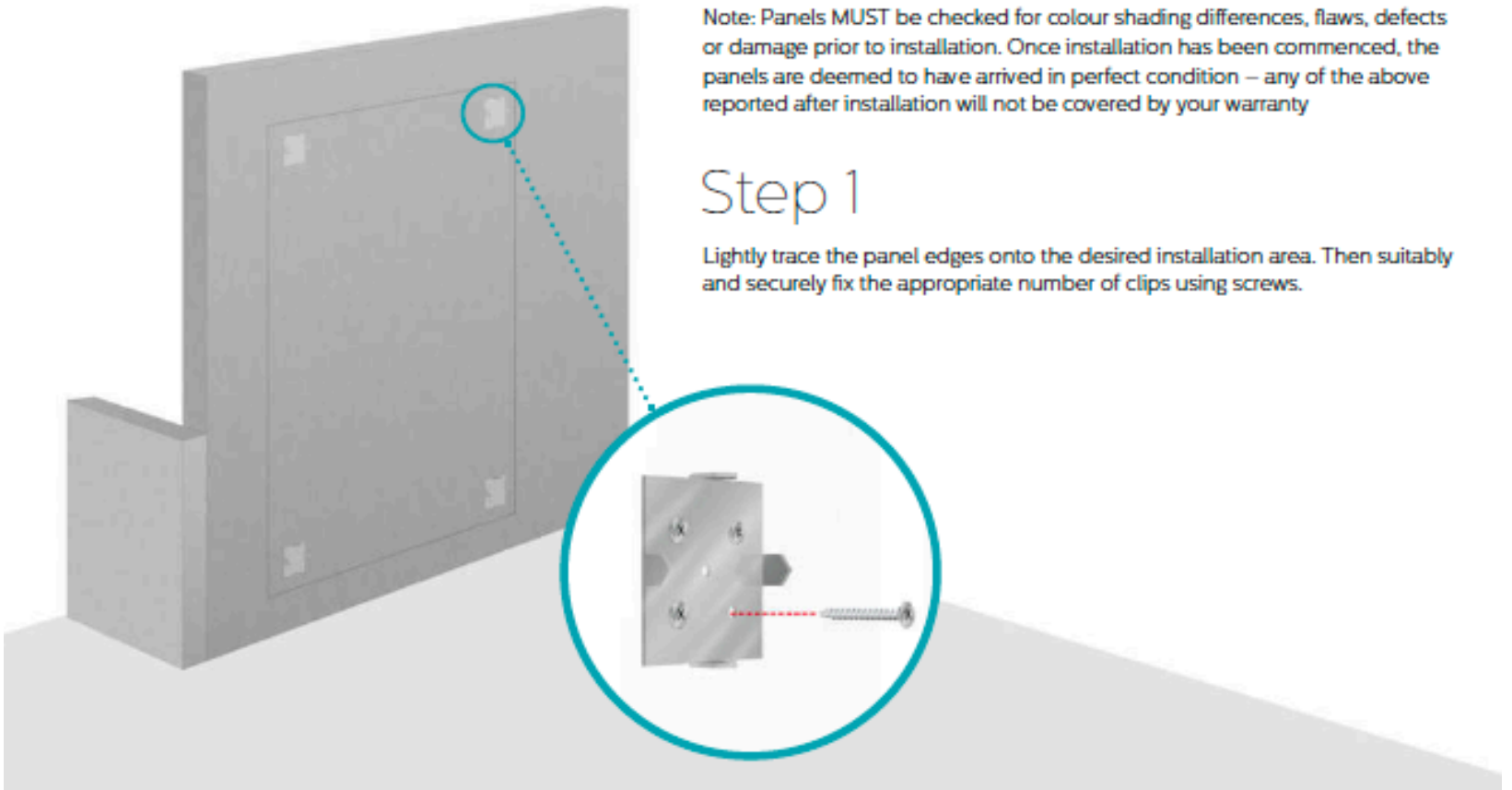
Installation

Ensure all wall surfaces to which the panel will be applied to are clean and dry. Panels can be fixed to most surfaces including concrete, plasterboard and block work providing they are solid. Wallpaper should be removed. Gloss paint roughened. Emulsion paint brushed with a stiff brush.

Note: Panels MUST be checked for colour shading differences, flaws, defects or damage prior to installation. Once installation has been commenced, the panels are deemed to have arrived in perfect condition – any of the above reported after installation will not be covered by your warranty

Step 1

Lightly trace the panel edges onto the desired installation area. Then suitably and securely fix the appropriate number of clips using screws.



Blupuffin Designs
Suite 105, 11500-29 Street SE, Calgary, Alberta, T2Z 3W9,
Canada
www.blupuffin.com | sales@blupuffin.com

Acoustic Sound Panels – Install Instructions

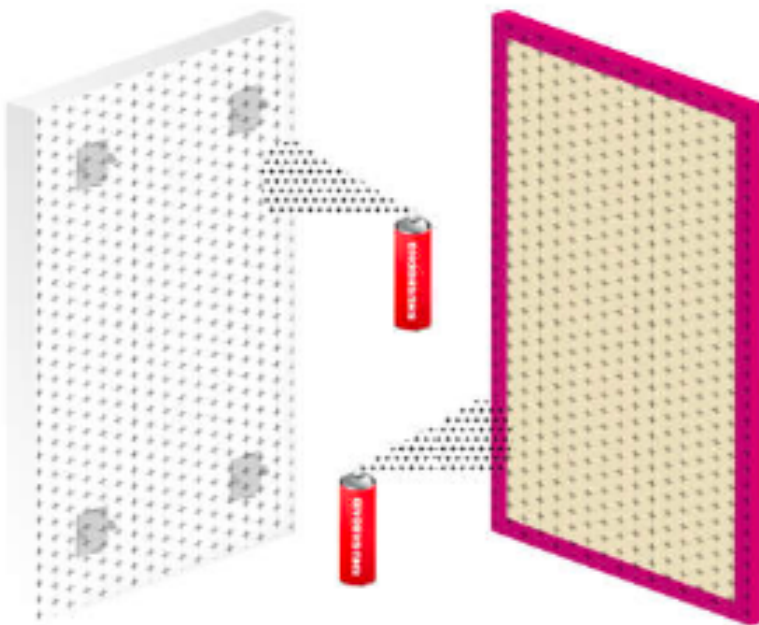
We recommend using the following number of impaling clips for the appropriate panel sizes.



Step 2

Spray ShushBond™ contact adhesive vertically onto the panels reverse surface and horizontally onto the desired installation area. Be sure to spray over the clips with ShushBond™.

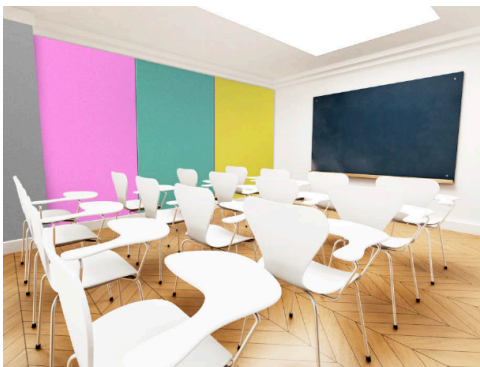
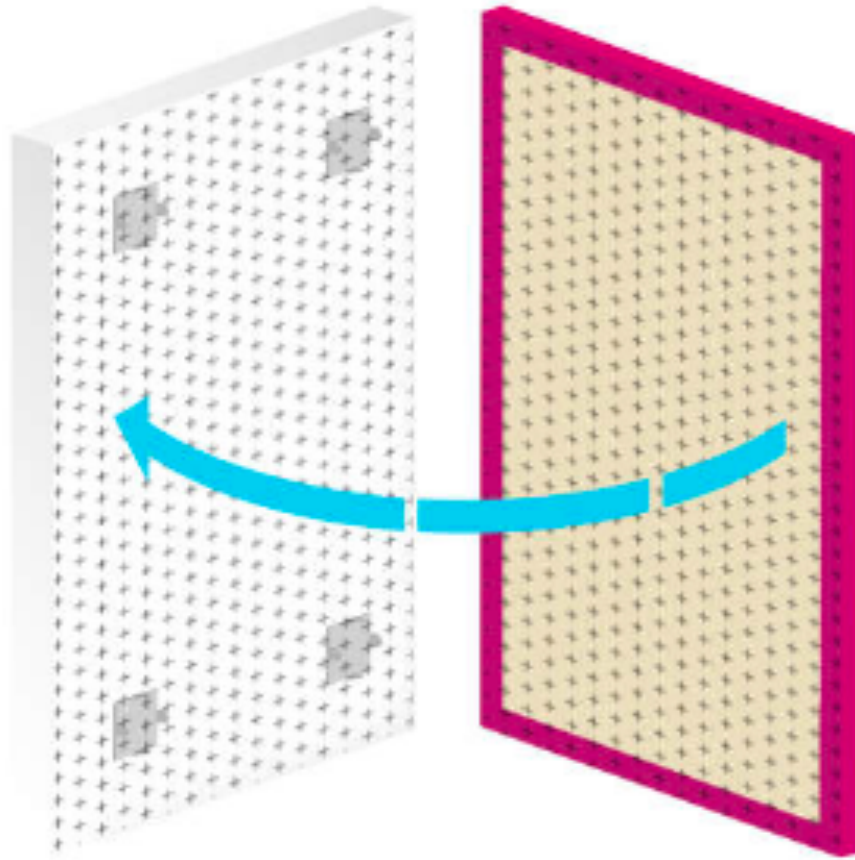
!!! ShushBond™ should be applied to 100% of the surface area on both surfaces !!!



Acoustic Sound Panels – Install Instructions

Step 3

After waiting for the adhesive to dry (2-5 minutes at 23°C) carefully align the panel to the marked area and push gently – allowing the clip spikes to bite into the panel. Once confident with the panel positioning, press firmly over the entirety of the surface and ensure maximum contact has been made with the wall.



BluPuffin Designs

**Suite 105, 11500-29 Street SE, Calgary, Alberta, T2Z 3W9,
Canada**

www.blupuffin.com | sales@blupuffin.com