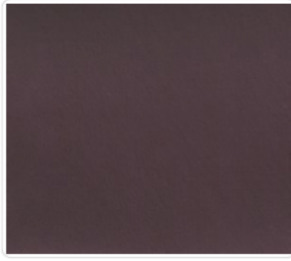


FABRIC – OLYMPUS – KEYSTON BROS.



Olympus American Beauty



Olympus Aubergine



Olympus Basil



Olympus Bittersweet



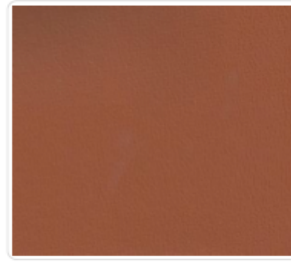
Olympus Black



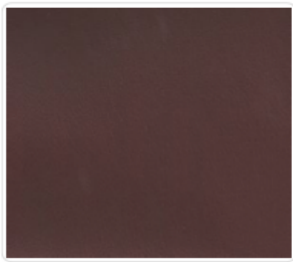
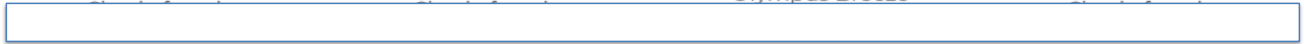
Olympus Blue Ridge



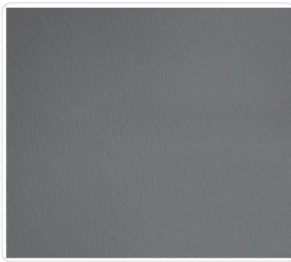
Olympus Breeze



Olympus British Tan



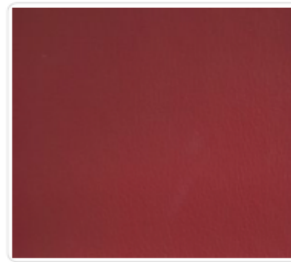
Olympus Burgundy



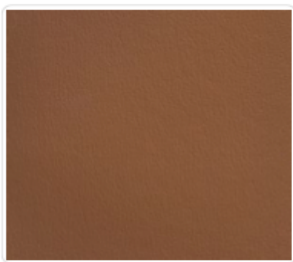
Olympus Cadet



Olympus Canvas



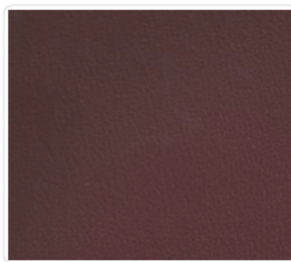
Olympus Chili Pepper



Olympus Cinnamon



Olympus Claret



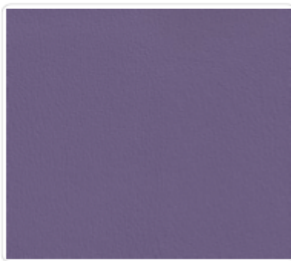
Olympus Cordovan



Olympus Cork



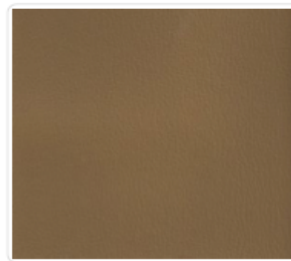
Olympus Cornsilk



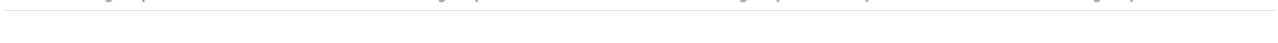
Olympus Crocus



Olympus Deep Violet



Olympus Desert

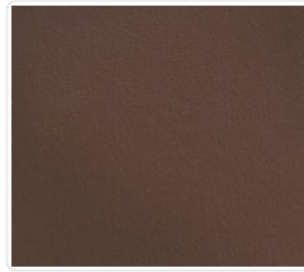




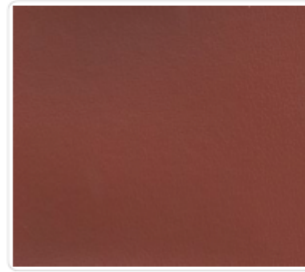
Olympus Desert Tan



Olympus Dove



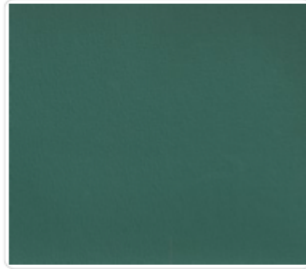
Olympus Earth



Olympus Gingersnap



Olympus Graphite



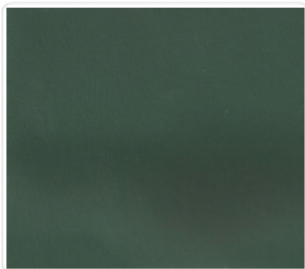
Olympus Grotto



Olympus Gunmetal



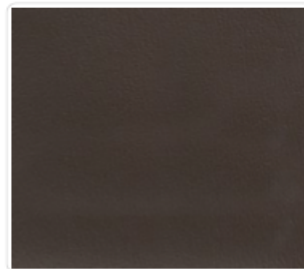
Olympus Honeydew



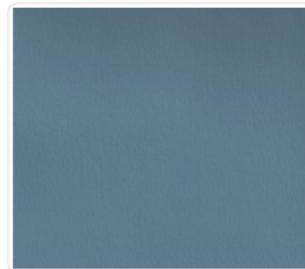
Olympus Hunter



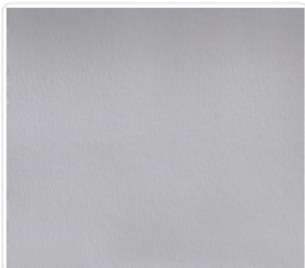
Olympus Ice Blue



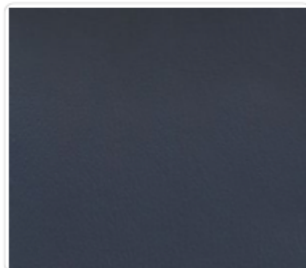
Olympus Java



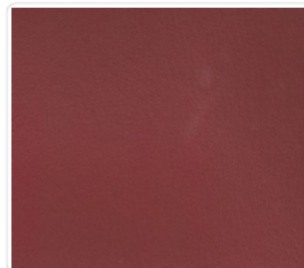
Olympus Lake



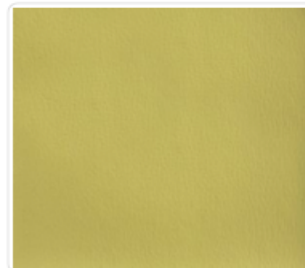
Olympus Light Gray



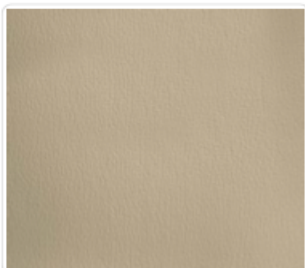
Olympus Majestic



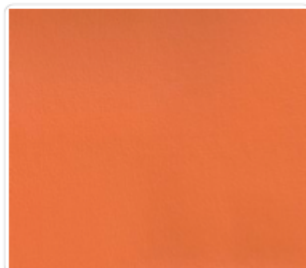
Olympus New Burgundy



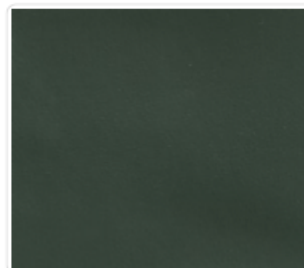
Olympus Oasis



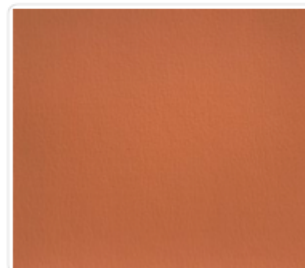
Olympus Oat



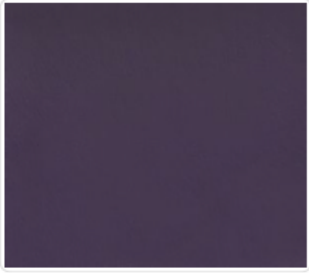
Olympus Orange Blast



Olympus Pine Needle



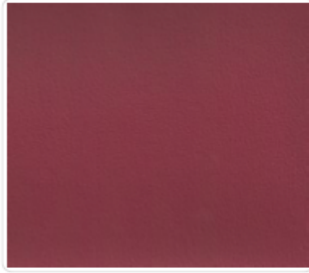
Olympus Pumpkin



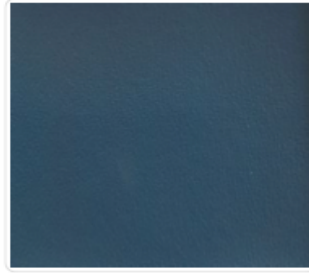
Olympus Purple Velvet



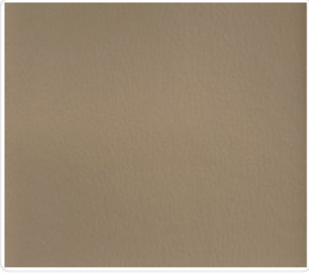
Olympus Raspberry



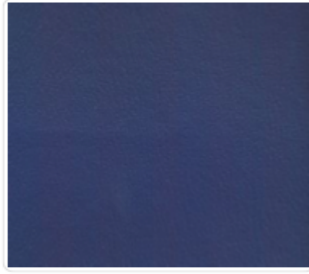
Olympus Red Berry



Olympus Regimental Blue



Olympus River Rock



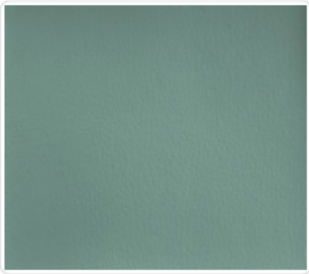
Olympus Royal



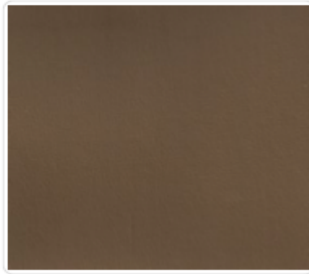
Olympus Sand



Olympus Slate



Olympus Spa



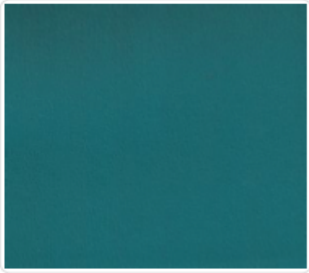
Olympus Suede



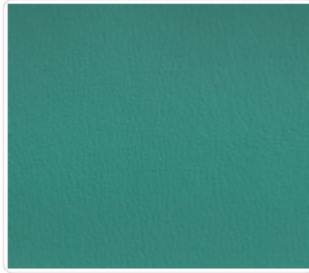
Olympus Sundance



Olympus Tahiti



Olympus Tropic



Olympus Turquoise



Olympus White



Blupuffin Designs
Suite 105, 11500- 29 Street SE| Calgary , Alberta, T2Z 3W9,
Canada

www.blupuffin.com | sales@blupuffin.com

FABRIC – OLYMPUS – KEYSTON BROS.

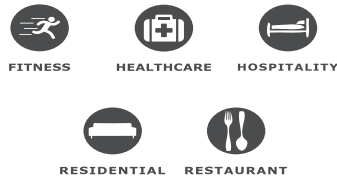


OLYMPUS

GENERAL SPECIFICATIONS

Width	54"
Weight	36 oz/linear yard
Roll Size	30 yds
Composition	100% PVC
Backing	100% Spun Polyester Terry Loop

RECOMMENDED APPLICATIONS



FLAME RETARDANCY SPECIFICATIONS

CAL-TB 117-2013	Passes
NFPA 260	Passes
FMVSS 302	Passes
UFAC Class 1	Passes
BIFMA Class A	Passes
IMO Part 8 (3.1 & 3.2)	Passes

PERFORMANCE SPECIFICATIONS

Abrasion	1,800,000+ DR
Cold Crack	-20°
UV Resistance	650 Hours
Mildew Resistance	Yes
Sulfide Stain Resistant	Yes

CLEANING INSTRUCTIONS

Remove ordinary dirt and smudges with a mild soap and water solution and a clean, soft cloth or towel. Dry with a soft, lint-free cloth or towel. CAUTION: The use of vinyl "conditioners" or "protectants" is not recommended and should be avoided on vinyl treated with PreFixx® protective finish.

To clean difficult stains, locate the staining agent in the list below and follow the corresponding recommended cleaning method. For best results, treat stains immediately. Cleaning Tip: to determine the method and type of cleaners, the source of the stain should be identified.

Type of Stain:

Baby oil, ketchup, chocolate, motor oil, olive oil, grape juice, blood, tea, coffee and betadine, use **Method 1**
Eye shadow, crayon and grease, use **Method 1**, if stain remains, use **Method 2**
Tobacco tar (nicotine), permanent felt marker, yellow mustard, lipstick, ballpoint pen and spray paint, use **Method 1**, if stain remains, use **Method 2** and for remaining stubborn stains use **Method 3**

Method 1: Clean area with Formula 409® All-Purpose Spray Cleaner or Fantastik® Spray Cleaner, using a soft cloth or damp sponge, rinse area with fresh water, then dry with a clean lint-free cloth.

Method 2: Use a solvent-type cleaner, such as rubbing alcohol (isopropyl alcohol). Rinse cleaned area with fresh water, then dry with a clean lint-free cloth.

Method 3: Use a strong, active solvent cleaner diluted in water (70% water/30% solvent cleaner) such as acetone based nail polish remover (acetone/water). Clean with a soft cloth or damp sponge. Stain should be removed with less than 6 rubs. If the stain persists after 6 rubs, the stain has set and probably cannot be removed. Rinse area with fresh water, then dry with a clean, lint-free cloth.



Blupuffin Designs
Suite 105, 11500- 29 Street SE | Calgary , Alberta, T2Z 3W9,
Canada

www.blupuffin.com | sales@blupuffin.com